

# Seeing Sepsis

*Early Detection Saves Lives*



Suspected infection and 2 or more SIRS criteria:

### Suspected Infection

- Fever/chills
- Currently on antibiotics
- Cough/SOB
- Cellulitis/wound drainage
- Weakness

### SIRS Criteria

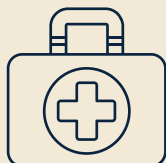
- Temp  $\geq 100.0$  or  $\leq 96.8$
- Pulse  $\geq 100$
- BP  $< 100$  or  $> 40$  mmHg from baseline
- Resp. rate  $> 20$ /SpO2  $< 90\%$
- Altered mental status

SIRS = Systemic Inflammatory Response Syndrome

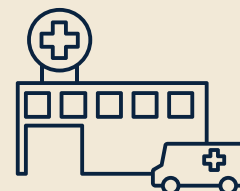


### Positive screen for sepsis

- Educate resident/family about status
- Review Advance Directives and options



### Notify provider



### Stay in facility

If Advance Directives and/or resident's wishes are in agreement, consider some or all of following order options:

- Labs per physician order
- Establish IV access
- Comfort care

### Transfer

- Prepare resident for transfer
- Prepare transfer sheet
- Call ambulance
- Call report to hospital
- Report positive sepsis screen
- Notify family/responsible party

### Comfort care

- Pain control
- Analgesic for fever
- Reposition every 2-3 hrs
- Oral care every 2 hrs
- Offer fluids every 2 hrs
- Keep family informed
- Adjust care plan as needed