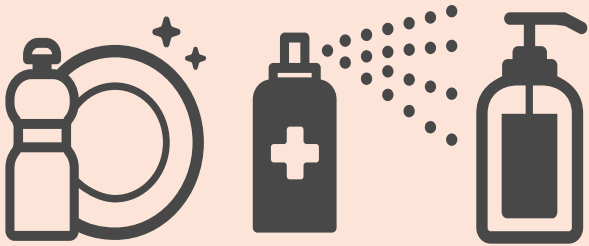


COVID-19

Reminders

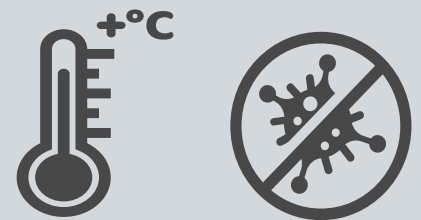


Disinfectants

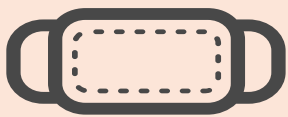
- Do not **overuse** or **stockpile**
- Do not mix bleach or other cleaning and disinfection products together
- If disinfectants are in short supply, alternative disinfectants can be used**

**i.e., 1/3 cup of bleach added to 1 gallon of water, or 70% alcohol solutions

- Coronavirus on surfaces and objects naturally **die within hours to days**
- **Warmer temperatures** reduces survival time of the virus
- Routine cleaning with **soap and water** removes germs and dirt from surfaces



Surfaces



PPE

Staff should wear appropriate **PPE for cleaning** to avoid toxic effects from disinfecting chemicals.

Practice social distancing, wear facial coverings and follow proper prevention hygiene such as washing your hands frequently and using alcohol-based (at least 60% alcohol) hand sanitizer when soap and water are not available.



HealthCap
RISK MANAGEMENT & INSURANCE